



Dallas Love Field Noise Dynamics



Contents

- Noise Corner.....2
- Flight Operations Report.....4
- Noise Complaints.....6
- Flight Track Density Map.....7
- 65 DNL Contour Map.....9
- Scheduled Runway Closures...10
- Airport Diagram.....11

Noise Corner

Introduction

Thank you for subscribing to Dallas Love Field's (DAL) Monthly Noise Dynamics. This newsletter is published for those interested in the topic of aircraft noise here at Dallas Love Field by providing useful information, monthly data, upcoming events and news.

Residents interested in receiving our monthly noise dynamics can send an email request to AVINoise@dallas.gov

Upcoming Events

- **The engine runup area has reopened for regular operations as of 12-23-24.**

Noise Corner

Outreach and Educational Activities

If you would like the Airport Noise Monitoring Specialist to attend neighborhood meetings, schools, or any other outreach activities to serve as a resource on aircraft noise related concerns, please email AVINoise@dallas.gov to let us know.

Helpful Links (Click on Icon to access link)



[NoiseLab](#)

View information regarding aviation noise and/or the Voluntary Noise Program. NoiseLab allows you to obtain reports, view runway closures and access archived documents such as: LFEAC (Love Field Environmental Advisory Committee) presentations, annual DNL contour reports and newsletters.



[Flight Tracker - DAL](#)

Understand aircraft flight pattern, self-investigate aircraft events and submit noise concerns.



[Flight Tracker - DEA](#)

Access Dallas Executive Airport's Flight Tracker.



[YouTube - Flight Tracker](#)

A demonstration of Flight Tracker



[YouTube - DAL Air Traffic Operations by FAA](#)

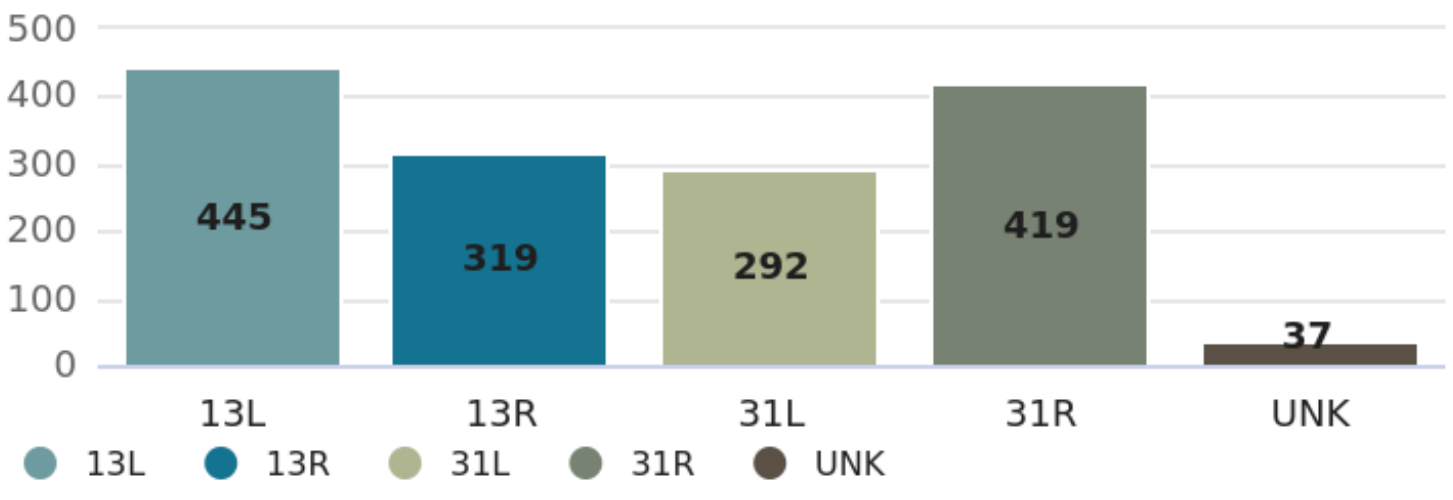
An overview of the National Airspace System around the DFW Metroplex.

December

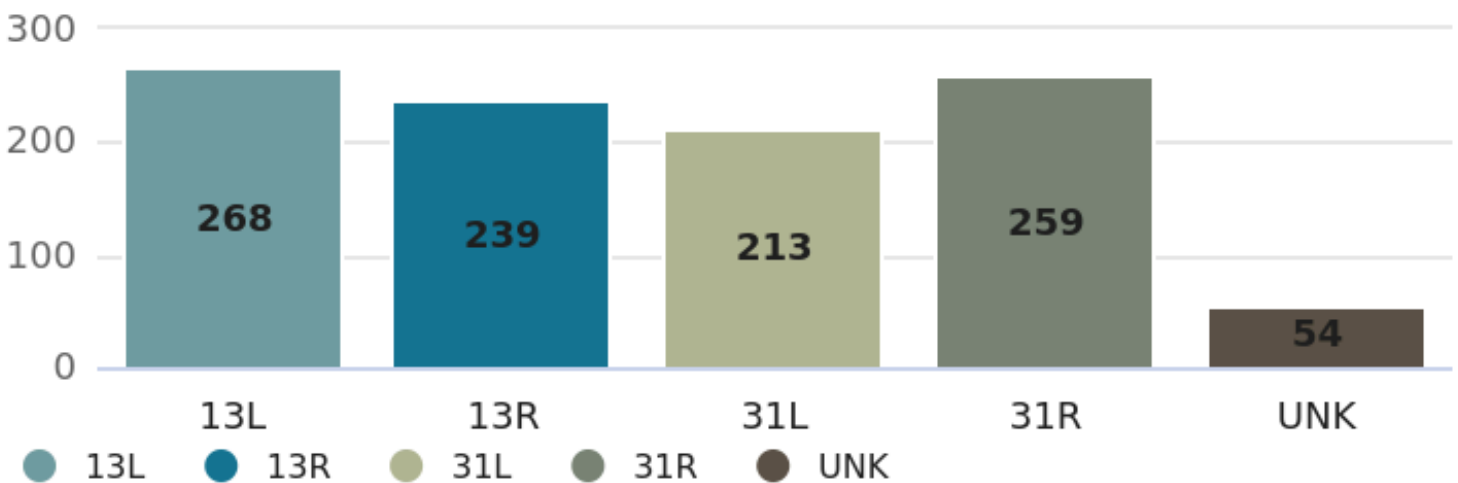
Arrivals and Departures

From 9 p.m. - 6 a.m.

ARRIVALS PER RUNWAY

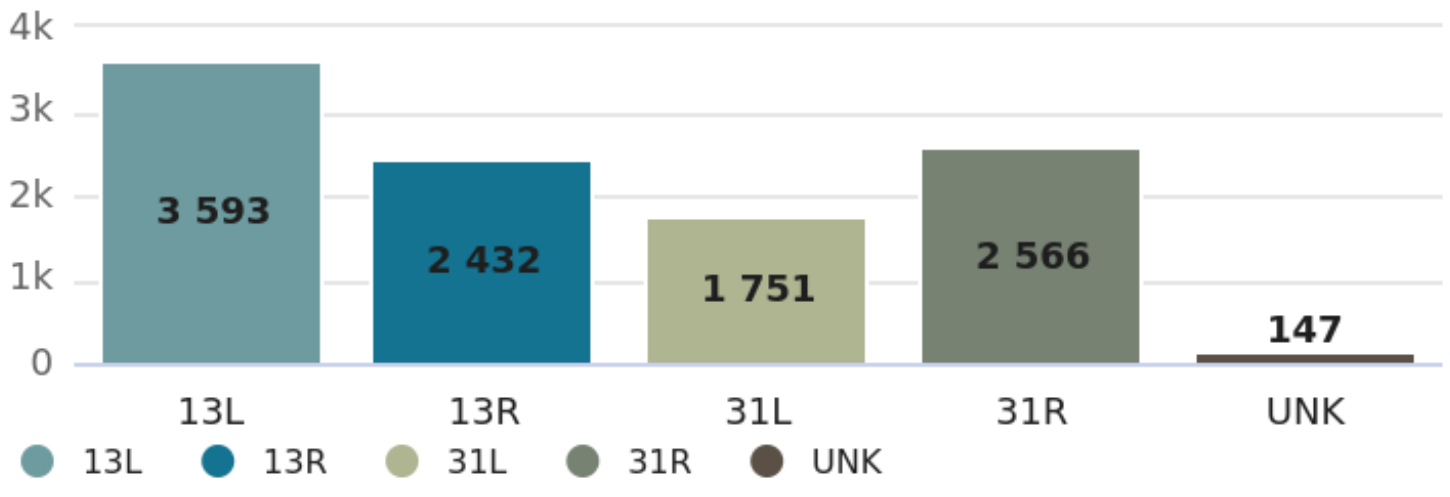


DEPARTURES PER RUNWAY

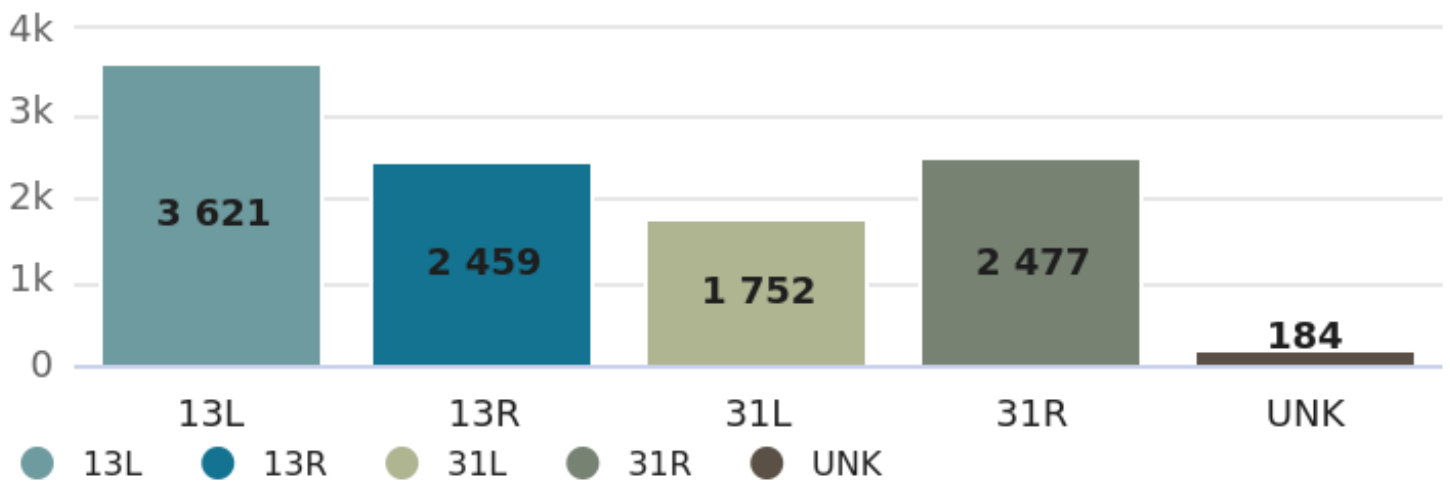


December Arrivals and Departures

ARRIVALS PER RUNWAY



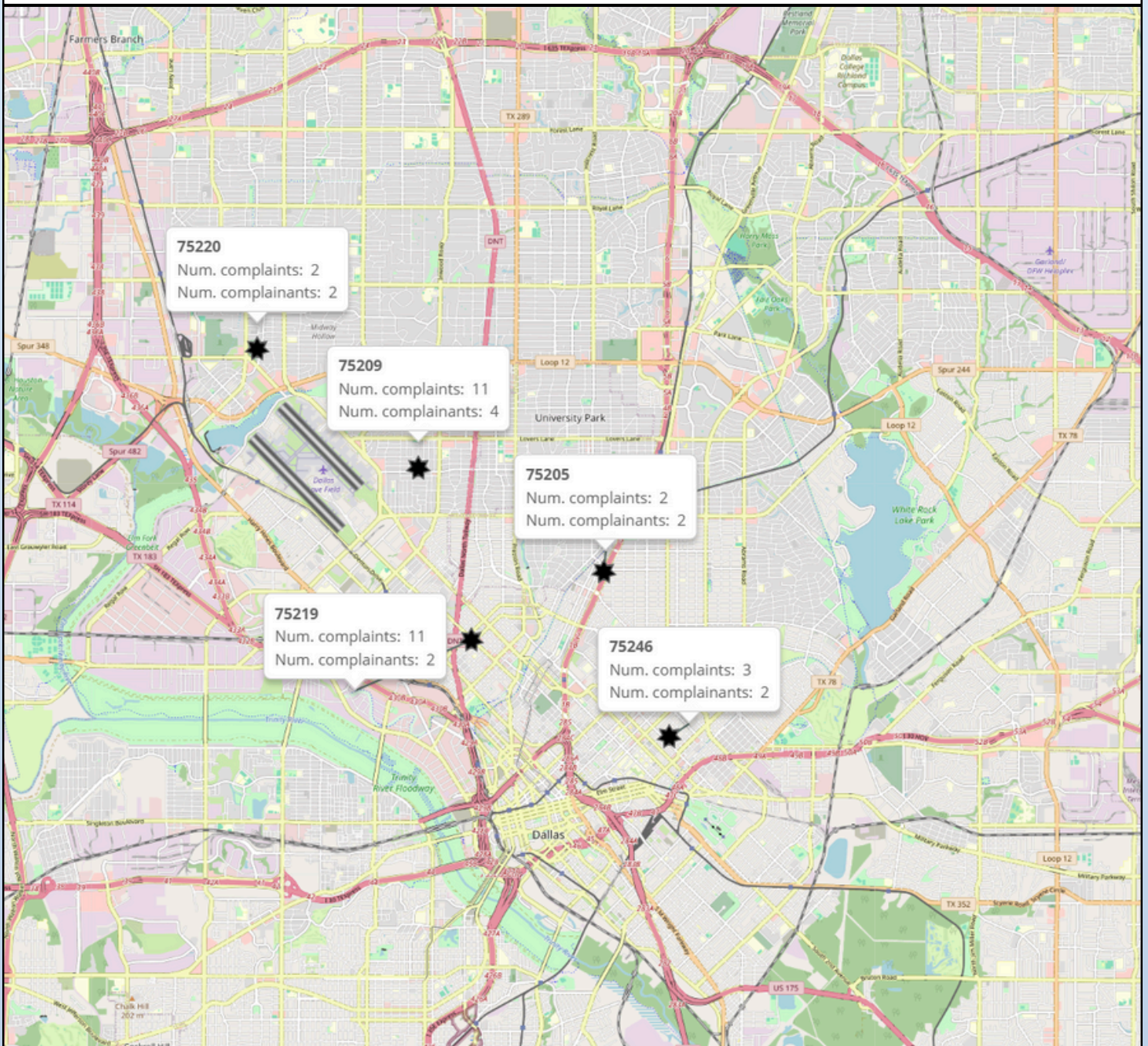
DEPARTURES PER RUNWAY



December

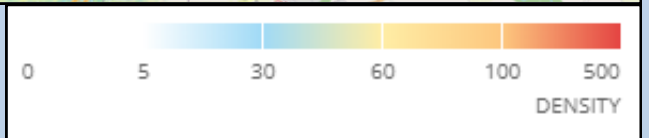
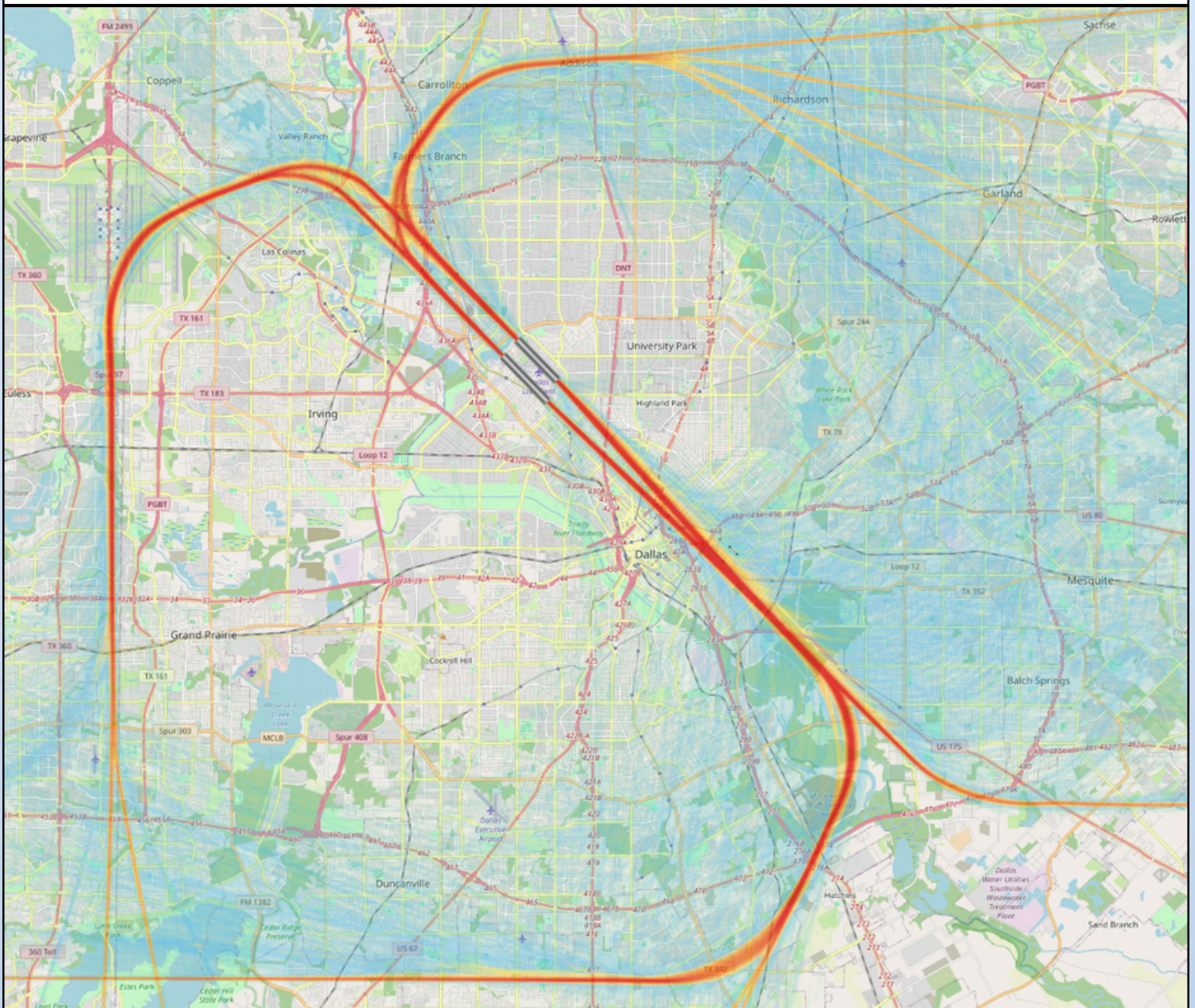
Number of Complaints by Zip Code

The map below displays the number of complaints and complainants for zip codes in the immediate Dallas Love Field area.



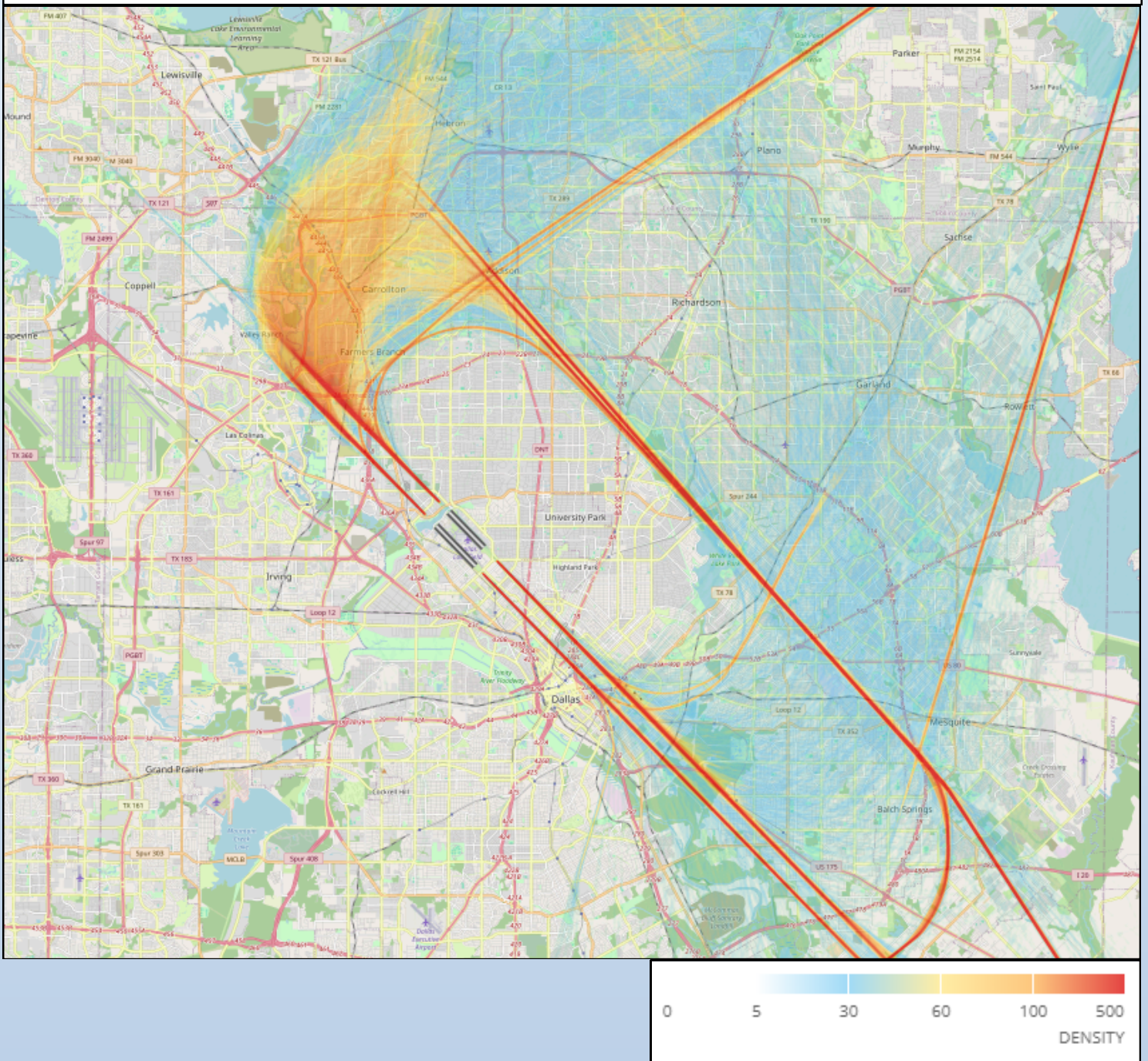
Flight Track Density Map December Departures

The following map takes all departure flight track data for the month and creates the radar density map. Dark red in the middle of the picture shows the highest density of flight tracks over the runways. The colors gradually move out to blue as the least dense.



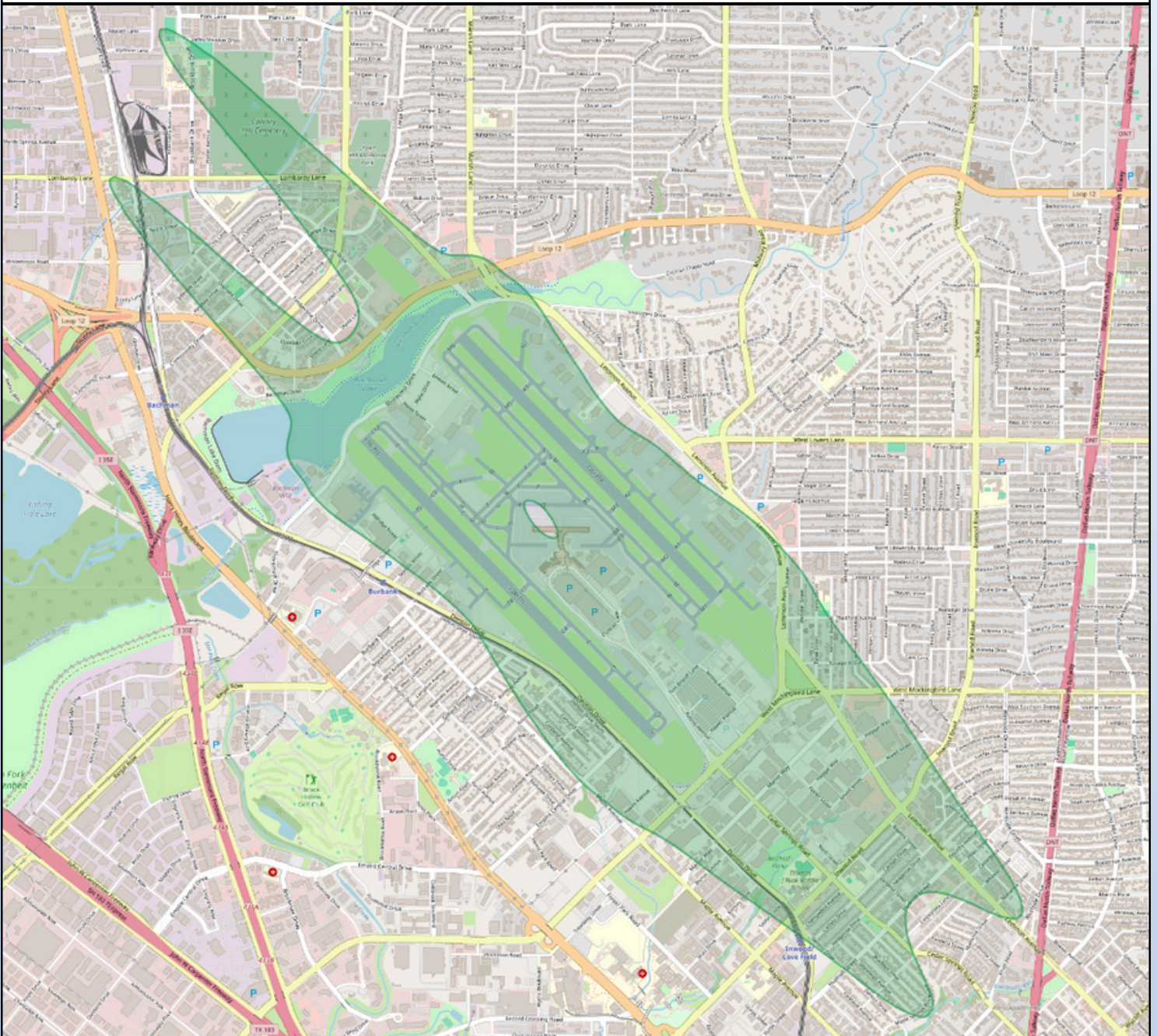
Flight Track Density Map December Arrivals

The following map takes all arrival flight track data for the month and creates the radar density map. Dark red in the middle of the picture shows the highest density of flight tracks over the runways. The colors gradually move out to blue as the least dense.



2023 Day-Night Average Sound Level (DNL) Contour Map

DNL is a metric that reflects a person's cumulative exposure to sound over a 24-hour period, expressed as the noise level for the average day of the year on the basis of annual aircraft operations. Below is a map of the **2023 65 dB** contour map for DAL. The 2023 Contour Report can be found [here](#).



Scheduled Runway Closures

Runway 13L/31R (Lemmon) Closures

- **Tuesday, Jan 7th 11:00 p.m. - Wednesday, Jan 8th 6:00 a.m.:**
Runway 13L/31R closed for General Maintenance
- **Wednesday, Jan 8th 11:00 p.m. - Thursday, Jan 9th 6:00 a.m.:**
Runway 13L/31R closed for General Maintenance

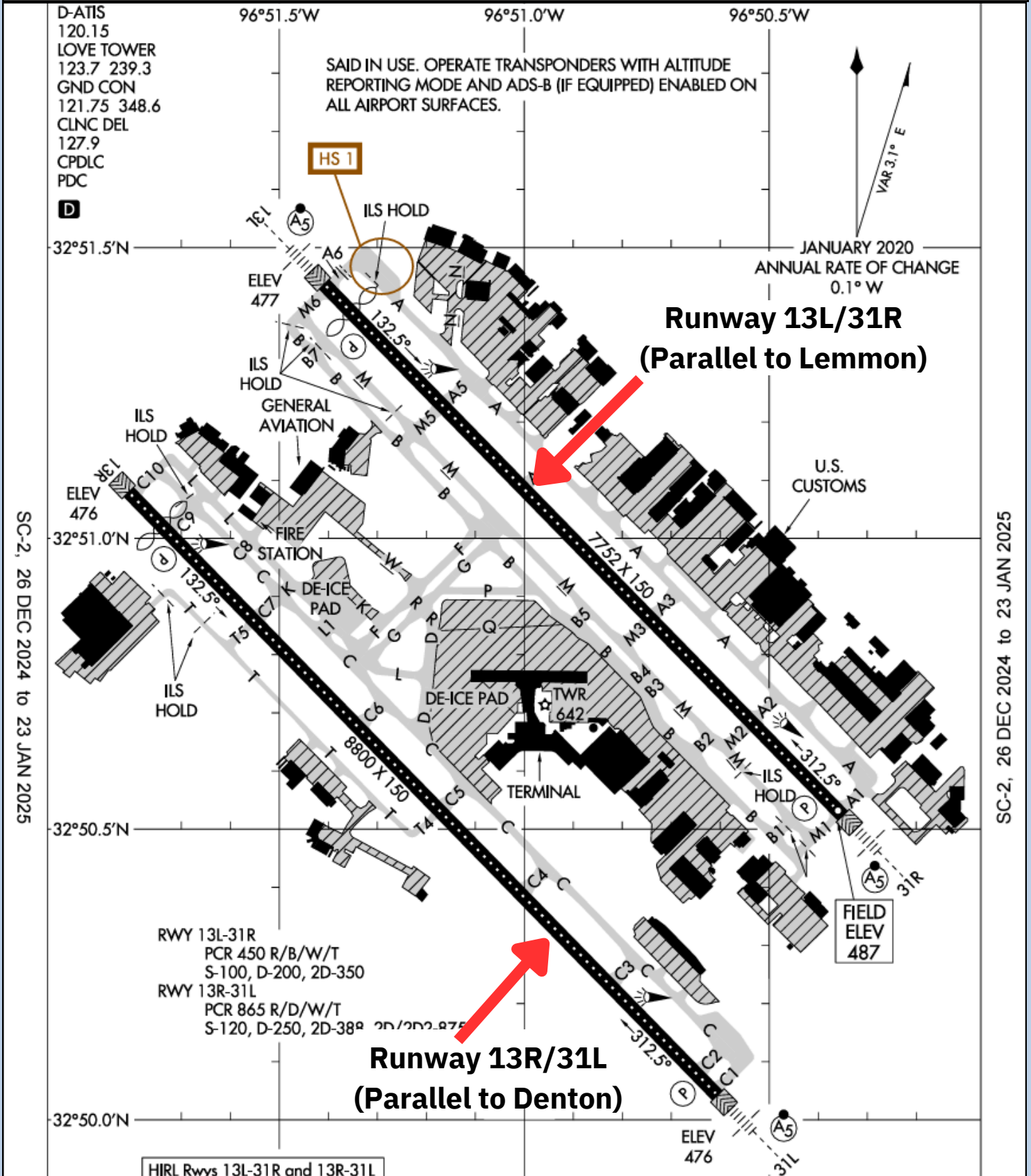
Runway 13R/31L (Denton) Closures

- **Thursday, Jan 9th 11:00 p.m. - Friday, Jan 10th 6:00 a.m.:**
Runway 13R/31L closed for General Maintenance
- **Friday, Jan 10th 11:00 p.m. - Saturday, Jan 11th 6:00 a.m.:**
Runway 13R/31L closed for General Maintenance

Stay updated on runway closures by clicking [here](#).

* Please see the airport diagram on the next page for locations of runways

Airport Diagram



In an effort to serve you better, Dallas Love Field has opened the Airport Operation Center (AOC) for your use. The AOC is staffed 24 hours per day to direct your airport related concerns. please call the AOC at 214-670-LOVE (5683).

If you have any noise-related inquiries,
Please call 214-671-8096

Translated copies of this newsletter are
available upon request.

Las copias traducidas de este boletín
están disponibles bajo petición
a solicitud.



Dallas Love Field